

# Hello Macon County Citizens!

Macon County has recently joined the Motor Vehicle Express Kiosk Program as a participating county for vehicle registration renewals.

Kiosks offer a fast, convenient alternative for completing vehicle registration renewals. Scanning and touchscreen technology is used to securely update vehicle registration information. You can also pay insurance fines at a kiosk.



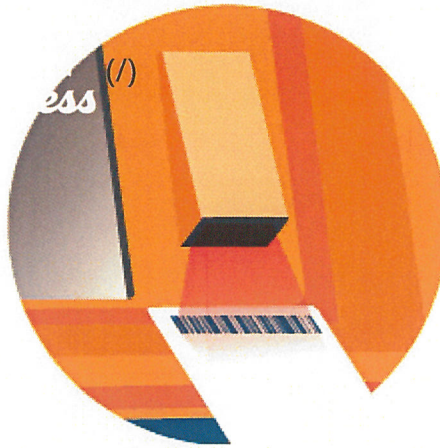
As a participating county, Macon County citizens will have access to any of the several kiosk locations in this state to renew tags!

This can be useful if you are out of town and your registration renewal is due. Just go online and find the nearest kiosk available in that area and renew your tag!!!

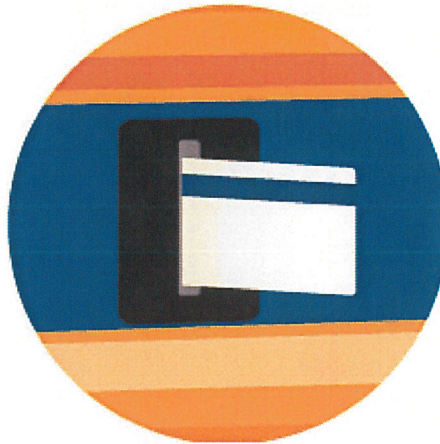
Step-by-step instructions, along with optional voice assistance, are provided on-screen. After a successful renewal, documents will print instantly at the kiosk.

**\*\*\*\*\*Macon County Working for Our Citizens\*\*\*\*\***

Rhonda Respress  
Macon County Tax Commissioner



**1) Scan your registration or enter your license plate number**



**2) Pay your taxes and fees via card or cash (some locations)**



**3) Your registrations print on the spot and you're ready to go!**



(/)

# TO USE A TAG KIOSK



- Vehicle(s) must be registered in a participating county.
- Must have a valid Georgia State driver's license.
- Address must be correct on your renewal notice.
- Must have proof of liability insurance on file (if applicable).
- Must have a Vehicle Emission Inspection on file (if applicable).
- You may renew up to 10 vehicle registrations per transaction.

If you have additional questions, please contact your local [County Tag Office](#) (<https://mvd.dor.ga.gov/motor/tagoffices/SelectTagOffice.aspx>) or read the [FAQs](#) (<https://dor.georgia.gov/mvd-self-service-tag-kiosk-faq>).

## PAYMENT INFORMATION

### Payment Options

Accepted payment options include credit or debit cards (AMEX, Discover, MasterCard and Visa) and cash where available.

### Fees

There may be convenience fees applied to kiosk transactions. These fees are in addition to the other fees and taxes due at the time of renewal. Your renewal notice reflects the total fees due.

---

Brought to you by the  
**Georgia Department of Revenue**  
(<https://dor.georgia.gov/>)

---

 **FIND A KIOSK**  
(/map)







## Why Wait in Line?

How fast can you renew? Tag kiosks are as fast as 1-2-3.

**Self-Service Tag Kiosk (<https://gamvexpress.com/>)**